



WHITE PINE CREATES THE FINEST IN ASSISTED LIVING

If you could create the ideal senior living arrangement for your parents (or yourself), it's likely you'd go through much the same process we did when planning our White Pine assisted living apartments in Cottage Grove, Minnesota.

Building on our years of experience owning and operating senior housing and assisted living properties, we understood that folks want an affordable, safe environment that strikes the right balance between their needs and their independence.

The Concept

We found a beautiful and convenient setting along the wooded bluffs at the "North Gateway" to the City of Cottage Grove. There's room for a 2-story 41 unit apartment building, with underground parking. The building will be surrounded by flower and vegetable gardens, outdoor patios with barbeques and walking paths connected to the city's trails.

Our planning began with homemaking in mind. Each suite has a modern, convenient kitchenette with stove/oven, refrigerator and microwave. You can prepare anything from a light breakfast to a full home-cooked meal. Each suite has its own laundry and private bath or shower designed for easy access. The suite has plenty of comfortable living areas and large windows for viewing the ever-changing Minnesota seasons. There is an emergency call system for safety. Suite maintenance, weekly housekeeping, flat linen service and meals and snacks are also available.

Outside their suites, folks will find a café, brilliant sunrooms, libraries, computer room, fitness room, and a private dining room for residents and their families along with easy access to a beauty/barber shop. There's underground parking for those who drive, and scheduled transportation for those who don't.

Living Here

White Pine assisted living is an affordable, preferable alternative to other senior living environments. This is living without the worries of aging. This is also living without the worries of real estate taxes, mortgage payments, insurance, utilities, snow shoveling, lawn mowing and maintenance.

We put together a assisted living rental package that includes everything listed on the next page. We also developed a menu of available services that support continued independence.

We are building now to meet a demand expressed over the past several years by many families and seniors. Contact us today and we'll take the worry out of senior care. You'll be glad you did!

White Pine • 6900 East Point Douglas Road South • Cottage Grove, Minnesota 55016 • 651.239.4458 or 800.920.4725

Cottage Grove, Minnesota Assisted Living Apartments



Assisted Living Private Apartment Rates:

Deluxe Studio	\$2,825
Deluxe One Bedroom	\$3,225
Deluxe One Bedroom Plus	\$3,625
Second Person	\$1,100

Amenities Include:

- 24-Hour Personal Care Staff Available
- Health and Wellness Program
- Medication Supervision
- Suite Maintenance and Weekly Housekeeping
- Flat Linen Service
- Scheduled Transportation
- Planned Social, Educational, and Cultural Activities
- Hair Care Salon
- Spacious Suite with Kitchenette, including Stove/Oven, Refrigerator and Microwave
- Emergency Call System
- Heat, Electricity, Water and Air Conditioning
- Complimentary Cable TV Services
- Breakfast, Lunch and Dinner Service Including Snacks Available
- Complimentary Laundry Facilities
- Use of all Common Areas Including Library, Outdoor Patio, Activities Area

Other Services Available:

Personal Laundry	\$60.00 per month
Resident Meals	\$5.00 per meal average
Guest Meals	\$8.00 each
Beauty and Barber Services	(prices available)
Heated Underground Parking & Storage	\$85.00 per month
Rehabilitation therapies including Physical Therapy and Massage	

Personal Care:

Up to 1 hour per day	\$550.00 per month
Up to 2 hours per day	\$1,100.00 per month
Up to 3 hours per day	\$1,650.00 per month
Medication Administration	\$550.00 per month

For the person who is independent and requires only occasional assistance, please ask about our Independent Rate.

White Pine • 6900 East Point Douglas Road South • Cottage Grove, Minnesota 55016 • 651.239.4458 or 800.920.4725

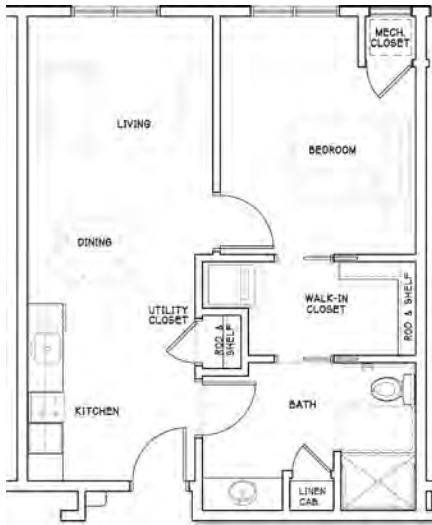
WWW.WPSENIORLIVING.COM

©2012 White Pine Holdings, LLC

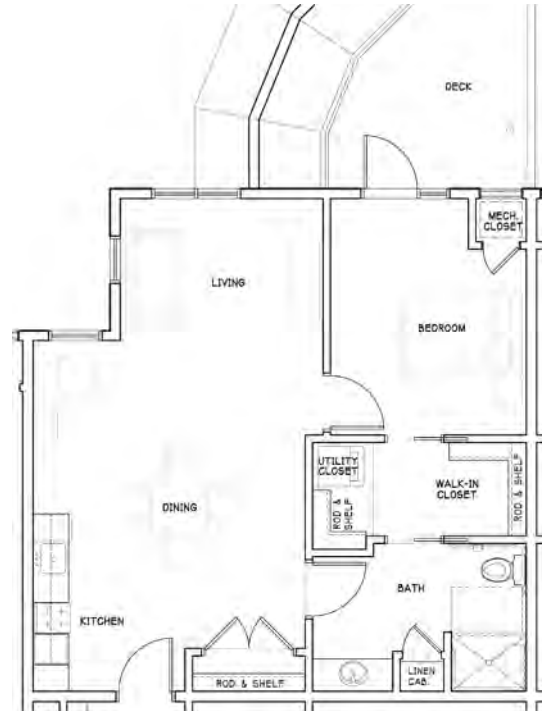
Cottage Grove, Minnesota Assisted Living Apartments



404 Sq. Ft.



627 Sq. Ft.



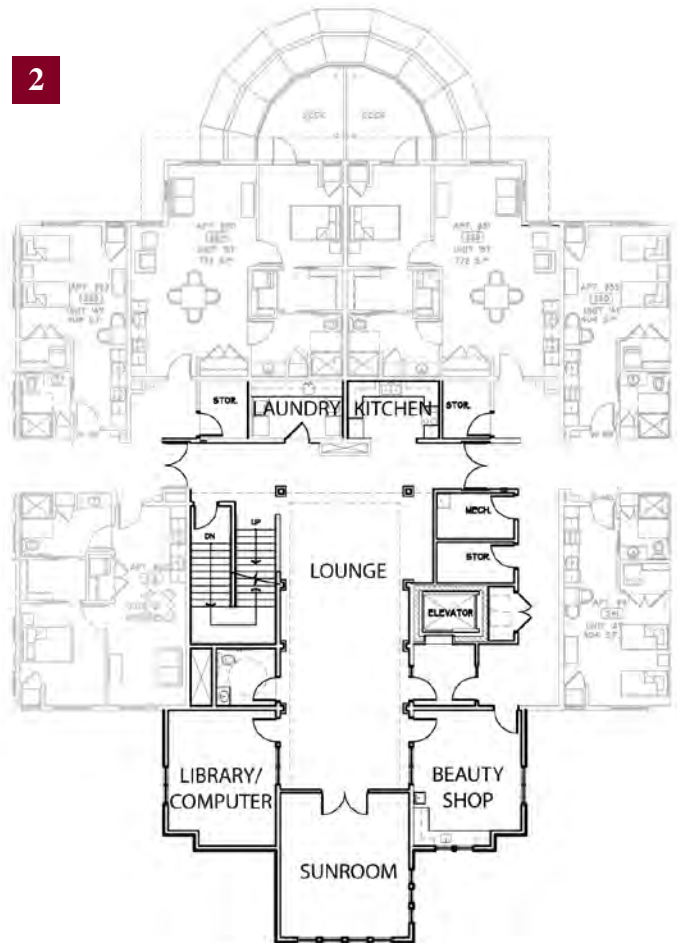
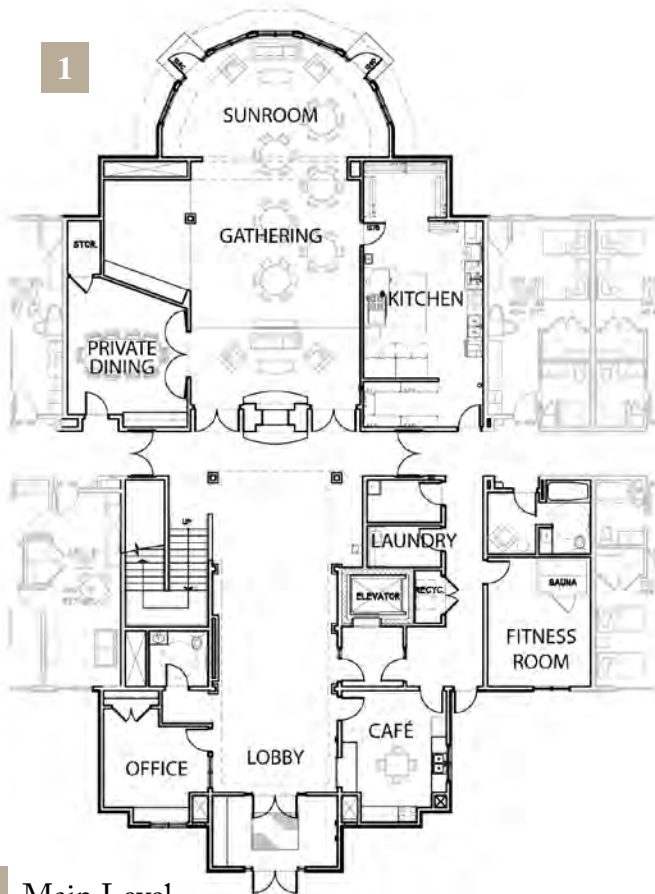
722 Sq. Ft.

White Pine • 6900 East Point Douglas Road South • Cottage Grove, Minnesota 55016 • 651.239.4458 or 800.920.4725

WWW.WPSENIORLIVING.COM

©2012 White Pine Holdings, LLC

Cottage Grove, Minnesota Assisted Living Apartments



1 Main Level

2 Second Level

White Pine • 6900 East Point Douglas Road South • Cottage Grove, Minnesota 55016 • 651.239.4458 or 800.920.4725

WWW.WPSENIORLIVING.COM

©2012 White Pine Holdings, LLC